

Special 80th Memorial Exhibition: *Takeuchi Seihō*

6 October (Thu.) – 4 December (Sun.) 2022

(Closed on 11 October and on Mondays, except for 10 October.)

Organized by Yamatane Museum of Art and Nikkei Inc.

List of Works

*1 **Period of Display** ○: 10/6-11/6, ●: 11/8-12/4, ◎: The scenes on display will be changed from 11/8.

*2 **Collection** YMA: Yamatane Museum of Art TNM: Tokyo National Museum PC: Private Collection

No.	Artists	Title	*1	Techniques / Materials	Date	*2
Section 1 Takeuchi Seihō						
1	Takeuchi Seihō (1864-1942)	<i>Pine Trees and Tigers</i>	○	Color on Silk	c. 1897	TNM
2		<i>Oriental Melon</i>		Color on Silk	1903	PC
3		<i>Tiger on Mt. Jiaoshan</i>		Color on Silk	1904	PC
4		<i>Crow in Winter</i>	●	Ink on Silk	1906	PC
5		<i>Sakyamuni Descending the Mountain</i>		Ink and Light Color on Silk	1908	PC
6		<i>Standing Hina Dolls</i>		Ink and Light Color on Silk	1908	PC
7		<i>A Pair of Cranes</i>		Color on Silk	c. 1912-42	YMA
8		<i>Tabby Cat</i> [Important Cultural Property]		Color on Silk	1924	YMA
9		<i>Chinese Landscape After a Shower</i>		Color on Paper	c. 1925	YMA
10		<i>After a Shower</i>		Color on Silk	c. 1926	YMA
11		<i>Green Pond</i>		Color on Silk	c. 1927	YMA
12		<i>Persimmons</i>		Color on Silk	c. 1927	YMA
13		<i>Chinese Cabbage</i>		Color on Silk	1929	PC
14		<i>Autumn Evening</i>		Color on Silk	c. 1929	YMA
15		<i>Spring Breeze in a Castle Town</i>		Color on Silk	1930	YMA
16		<i>Itako in Early Summer</i>		Color on Silk	1930	YMA
17		<i>Pond in Autumn</i>	●	Color on Silk	c. 1926-42	PC
18		<i>Bird on a Plum Tree</i>		Color on Paper	c. 1930	YMA
19		<i>High Waterfall</i>		Color on Silk	1932	PC
20		<i>Landscape in Rain</i>		Ink on Paper	c. 1932	YMA
21		<i>Crow in the Evening</i>		Ink on Paper	1933	YMA
22		<i>Landscape</i>		Ink on Paper	1933	YMA
23		<i>Horned Owl</i>		Color on Silk	c. 1933	YMA
24		<i>Frogs and Dragonfly</i>		Ink and Light Color on Paper	1934	YMA
25		<i>Dried Persimmons</i>		Color on Paper	c. 1926-42	YMA
26		<i>Ancient Pine Tree and Morning Sun</i>		Color on Silk	c. 1926-42	YMA
27		<i>Spring Breeze</i>		Color on Silk	1937	YMA
28		<i>Ducklings</i>		Color on Silk	c. 1937	YMA
29		<i>Bird on a Water Wheel</i>		Color on Silk	1938	YMA
30		<i>The Twelve Months in Paintings</i>		Color / Ink on Silk	c. 1938	YMA
31		<i>Bonito</i>		Color on Silk	c. 1926-42	PC
32		<i>Fruits of the Sea</i>		Color on Silk	c. 1926-42	PC
33		<i>Deer</i>		Color on Silk	c. 1926-42	PC
34		<i>A Warm Day in Winter</i>		Color on Silk	1939	YMA
35		<i>Flowery Late Spring</i>		Color on Silk	1940	YMA
36		<i>After the Rice Harvest</i>		Ink and Light Color on Paper	c. 1940	YMA
37		<i>Scenes of the Four Seasons on Poem Cards</i>		Color on Paper	c. 1926-42	YMA

No.	Artists	Title	*1	Techniques / Materials	Date	*2	
Section 2 Seihō's Predecessors, Contemporaries and Pupils							
38	Yokoyama Taikan (1868-1958)	<i>Pine, Bamboo and Plum</i>		<i>Pine</i>	Ink and Light Color on Silk	1934	YMA
	Kawai Gyokudō (1873-1957)			<i>Bamboo</i>	Color on Silk		
	Takeuchi Seihō (1864-1942)			<i>Plum</i>	Color on Silk		
39	Attributed to Nagasawa Rosetsu (1754-1799)	<i>Chinese Children at Play</i> [Important Art Object]		Color on Silk	18th Century	YMA	
40	Mori Tetsuzan (1775-1841)	<i>Rabbits</i>		Color on Silk	19th Century	YMA	
41	Mori Kansai (1814-1894)	<i>Takasago</i>		Color on Silk	1889	YMA	
42	Kunii Ōbun (1833-1887)	<i>Four Seasons in Kyoto</i> (Collaboration)	◎		Color on Silk	c. 1837-87	YMA
	Mochizuki Gyokusen (1834-1913)						
	Nakajima Yūshō (1837-1905)						
43	Kawabata Gyokushō (1842-1913)	<i>View of the Saigawa River</i>		Color on Silk	c. 1901	YMA	
44	Imao Keinen (1845-1924)	<i>Cowboy Under the Pine Trees</i>		Color on Silk	c. 1868-1924	YMA	
45	Kikuchi Hōbun (1862-1918)	<i>Twelve Months of Bird-and-Flower Paintings</i>	◎	Color on Silk	c. 1868-1918	YMA	
46	Tsuji Kakō (1870-1931)	<i>Hanshan and Shide</i>		Ink and Light Color on Paper	19th-20th Century	YMA	
47		<i>The Mansōtei (Korea)</i>		Color on Silk	1921	YMA	
48	Yamamoto Shunkyo (1871-1933)	<i>Cattle Grazing in a Vast Field</i>		Color on Silk	c. 1916	YMA	
49		<i>Limpid Stream</i>		Color on Silk	c. 1927-33	YMA	
50		<i>Polar Bear</i>		Color on Silk	1907	YMA	
51	Nishimura Goun (1877-1938)	<i>Cranes and Pine Tree</i>		Color on Silk	1933	YMA	
52		<i>Goldfish</i>		Color on Silk	1938	YMA	
53	Nishiyama Suishō (1879-1958)	<i>Puppies</i>		Color on Silk	1957	YMA	
54	Fukuda Heihachirō (1892-1974)	<i>Young Women and Peach Trees</i>		Color on Silk	1916	YMA	
55	Ikeda Yōson (1895-1988)	<i>"On a Straight Road, Lonesome,"</i> <i>by Santōka</i>		Color on Paper	1986	YMA	
56	Tokuoka Shinsen (1896-1972)	<i>Red Carp and Golden Carp</i>		Color on Paper	1966	YMA	
57	Uemura Shōkō (1902-2001)	<i>White Peacock</i>		Color on Paper	1973	YMA	
58	Tsuchida Bakusen (1887-1936)	<i>Poppies</i>		Color on Silk	c. 1923	YMA	
59		<i>Maiko, Apprentice Geisha</i>		Color on Silk	c. 1924	YMA	
60	Murakami Kagaku (1888-1939)	<i>Chinquapin Grove</i>		Color on Silk	1919	YMA	
61		<i>Nude</i> [Important Cultural Property]		Color on Silk	1920	YMA	
62	Ono Chikkyō (1889-1979)	<i>Early Morning</i>		Color on Paper	1969	YMA	
63	Irie Hakō (1887-1948)	<i>Wintry Shower</i>		Ink and Light Color on Paper	1937	YMA	



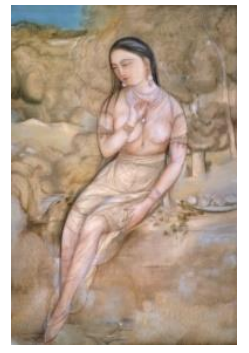
Takeuchi Seihō, *Tabby Cat* [Important Cultural Property], Color on Silk, 1924
Yamatane Museum of Art



Takeuchi Seihō, *Itako in Early Summer*
Color on Silk, 1930
Yamatane Museum of Art



Nishimura Goun
Polar Bear
Color on Silk, 1907
Yamatane Museum of Art



Murakami Kagaku
Nude
[Important Cultural Property]
Color on Silk, 1920
Yamatane Museum of Art

Next Exhibition: Special Exhibition

Depicting Japanese Landscapes: From Utagawa Hiroshige to Tabuchi Toshio

Period : 10 December (Sat.)2022– 26 February (Sun.) 2023

(Closed on 10 January, from 29 December to 2 January
and on Mondays, except for 9 January.)

Address: 3-12-36 Hiro-o Shibuya-ku, Tokyo 150-0012 JAPAN
TEL: +81-(0)47-316-2772 (NTT Hello Dial, English available)
URL: <https://www.yamatane-museum.jp/>

Utagawa Hiroshige
*Fifty-three Stations of the Tōkaidō Road:
Nihonbashi (Morning Scene)*
c. 1833-36, Yamatane Museum of Art
Display on 12/10-1/15

