

Special Exhibition Commemorating a Decade since the Yamatane Museum of Art Opened in Hiroo:

Reading *Nihonga* Through Color —Kaii's Blue and Gensō's Red

Period: 2 November (Sat.) – 22 December (Sun.) 2019

(Closed on 5 November, from 23 December to 2 January, and on Mondays, except for 4 November.)

Hours: 10am - 5pm (Last admission at 4:30pm)

Organized by: Yamatane Museum of Art and Nikkei Inc.

Sponsored by: SMBC Nikko Securities Inc. With the cooperation of: Yanaka Tokuouken

List of Works All works are the property of the Yamatane Museum of Art.

No.	Artists	Title	Techniques / Materials	Date
Blue				
1	Hashimoto Kansetsu (1883-1945)	<i>Mt. Fuji in Summer</i>	Color on Silk	1925
2	Kawabata Ryūshi (1885-1966)	<i>The Black Current</i>	Color on Silk	1932
3	Ono Chikkyō (1889-1979)	<i>Lights in the Offing</i>	Color on Paper	1977
4	Hashimoto Meiji (1904-1991)	<i>Moonlight Night</i>	Color on Paper	1959
5	Higashiyama Kaii (1908-1999)	<i>End of the Year</i>	Color on Paper	1968
6		<i>Autumn Colors</i>	Color on Paper	1986
7	Hirayama Ikuo (1930-2009)	<i>Stone Pillar of King Aśoka</i>	Color on Paper	1976
8	Miyasako Masaaki (1951-)	<i>Fireworks into the Water: Spiral</i>	Color on Silk	2012
Green				
9	Kobayashi Kokei (1883-1957)	<i>Fruit</i>	Color on Silk	1936
10	Yasuda Yukihiko (1884-1978)	<i>Kannon, the Bodhisattva of Mercy</i>	Color on Silk	c. 1924
11	Ishii Rinkyō (1884-1930)	<i>Morning on Niemon Island: from Triptych entitled "From the Journey through Southern Kazusa"</i>	Color on Silk	1921
12	Yamaguchi Hōshun (1893-1971)	<i>On the Table</i>	Color on Paper	1952
13	Higashiyama Kaii (1908-1999)	<i>Rising Moon</i>	Color on Paper	1965
14		<i>Pervasive Verdure</i>	Color on Paper	1976
15	Satō Taisei (1913-2004)	<i>A Pure Note</i>	Color on Paper	1947
16	Kondō Kōmei (1924-2015)	<i>Cool Night</i>	Color on Paper	1970
Red				
17	Shibata Zeshin (1807-1891)	<i>Zhong Kui</i>	Color on Silk	19th Century
18	Itō Shinsui (1898-1972)	<i>Portrait of a Lady</i>	Color on Paper	1957
19	Okuda Gensō (1912-2003)	<i>Scarlet Mountain in a Mist</i>	Color on Paper	1974
20		<i>A Poet's Poem; the Theme: Sound</i>	Ink and Color on Gold-Leafed Silk	1981
21		<i>Oirase Ravine: Autumn</i>	Color on Paper	1983
22		<i>Spring Landscape on a Lake Shore</i>	Color on Silk	1986
Yellow				
23	Takeuchi Seihō (1864-1942)	<i>Ducklings</i>	Color on Silk	c. 1937
24	Kawai Gyokudō (1873-1957)	<i>Fine Autumn Day</i>	Color on Silk	c. 1935
25	Kobayashi Kokei (1883-1957)	<i>Sanbokan Oranges</i>	Color on Silk	1939
26	Mochizuki Syunkō (1893-1979)	<i>Yellow Peonies</i>	Color on Gold-Leafed Paper	1956
27	Ogura Yuki (1895-2000)	<i>Reminiscence</i>	Color on Silver-Leafed Paper	1968
Black				
28	Hashimoto Gahō (1835-1908)	<i>Hawk on a Rock</i>	Ink and Light Color on Paper	c. 1895
29	Takeuchi Seihō (1864-1942)	<i>Landscape in Rain</i>	Ink on Paper	c. 1932
30	Tsuji Kakō (1870-1931)	<i>Sailboats</i>	Ink on Paper	c. 1912-26
31	Kawai Gyokudō (1873-1957)	<i>Moon after a Shower</i>	Ink and Light Color on Silk	1948
32	Maeda Seison (1885-1977)	<i>Yoshida Shōin in Rendai-ji Temple near Shimoda</i>	Color on Paper	1967
33	Okumura Togyū (1889-1990)	<i>Maiko, Apprentice Geisha</i>	Color on Silk	1954
34	Moriya Tadashi (1912-2003)	<i>Hasekura Tsunenaga, Head of the Keichō Mission to Rome (1613-20)</i>	Color on Paper	1981
35	Oyama Katashi (1934-)	<i>Baptism in Amakusa</i>	Color on Paper	1978

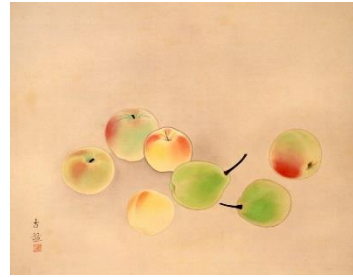
No.	Artists	Title	Techniques / Materials	Date
White				
36	Mori Kansai (1814-1894)	<i>Arashiyama in the Snow</i>	Color on Silk	c. 1890
37	Uemura Shōkō (1902-2001)	<i>White Peacock</i>	Color on Paper	1973
38	Higashiyama Kaii (1908-1999)	<i>White Wall</i>	Color on Paper	1952
39		<i>White Mountain</i>	Color on Paper	1964
40	Kayama Matazō (1927-2004)	<i>Waves</i>	Ink and Color on Paper	1979
41	Senju Hiroshi (1958-)	<i>Study for the Shofuso Fusumae</i>	Color on Paper	2006
Silver				
42	Murakami Kagaku (1888-1939)	<i>Chinquapin Grove</i>	Color on Silk	1919
43	Yamamoto Kyūjin (1900-1986)	<i>Towering Peaks in Winter</i>	Color on Paper	1961
44	Yokoyama Misao (1920-1973)	<i>Manhattan</i>	Color on Paper	1961
45	Kayama Matazō (1927-2004)	<i>Screen with Floral Fans</i>	Color on Silk	1966
46	Tabuchi Toshio (1941-)	<i>Embanked Village</i>	Color on Paper	1979
Gold				
47	Yokoyama Taikan (1868-1958)	<i>Congratulations</i>	Ink and Gold on Paper	20th Century
48	Kobayashi Kokei (1883-1957)	<i>Autumn Fruit</i>	Color on Paper	1934
49	Takayama Tatsuo (1912-2007)	<i>Mid Autumn</i>	Color on Gold-Leafed Silk	1986
50	Morita Kōhei (1916-1994)	<i>Izumo no Okuni (Originator of Kabuki)</i>	Color on Gold-Leafed Paper	1974
51	Kayama Matazō (1927-2004)	<i>Nude</i>	Color on Paper	1976



Shibata Zeshin,
Zhong Kui,
19th Century,
Yamatane
Museum of Art



Kawabata Ryūshi, *The Black Current*, 1932,
Yamatane Museum of Art



Kobayashi Kokei, *Fruit*, 1936,
Yamatane Museum of Art



Takeuchi Seihō,
Ducklings, c. 1937,
Yamatane Museum of Art



Kobayashi Kokei,
Autumn Fruit, 1934,
Yamatane Museum of Art



Tsuji Kakō,
Sailboats, c. 1912-26,
Yamatane Museum
of Art

←
Murakami Kagaku,
Chinquapin Grove,
1919, Yamatane
Museum of Art

Next Exhibition:

Special Exhibition Commemorating a Decade since the Yamatane Museum of Art Opened in Hiroo:

Uemura Shōen and World of Bijinga, Paintings of Beautiful Women

Period : 3 January (Fri.) – 1 March (Sun.) 2020

(Closed on 14 January, 25 February, and on Mondays, except for 13 January, 24 February.)

Address: 3-12-36 Hiro-o Shibuya-ku, Tokyo 150-0012 JAPAN

TEL: +81-(0)3-5777-8600 (NTT Hello Dial, English available)

URL: <http://www.yamatane-museum.jp/>

Uemura Shōen, *Dressed for Spring*
c. 1936, Yamatane Museum of Art

