

Special Exhibition Commemorating the 50th Anniversary of the Yamatane Museum of Art
Yamatane Museum of Art NIHONGA AWARD: Seed 2016
— Meet the Future of *Nihonga* —

31 May – 26 June 2016 (Closed on Mondays)

Hours: 10am - 5pm (Last admission at 4:30pm)

Admission Fees: Adults: 700 [500] yen; university and high school students: 500 [300] yen; middle school and younger children: free of charge

*Figures in brackets are for groups of 20 or more, advance tickets, repeaters with used tickets, and those who are wearing kimono.

*Disability ID Holders and one person accompanying them are admitted free of charge.

Organized by:

Yamatane Museum of Art

With support from the Agency for Cultural Affairs, Government of Japan,
Tokyo Metropolitan Government, and Tokyo Shimbun

Sponsored by: Seiko Holdings Corporation and the Asahi Shimbun Foundation

◆ **Highlights of the Exhibition** ◆

Yamatane Museum of Art NIHONGA AWARD: Seed 2016

Grand Prize : Miyako Emi, *On the Verge: Dream or Reality*, Color on Silk, 2016

Prize for Excellence : Hasegawa Masaya, *Only*, Color on Paper, 2016

Special Prize (Presented by Seiko Holdings Corporation) :

Karimata Kōsuke, *Dynamic Scenery: Ramboda Falls in Sri Lanka*, Color on Paper, 2016

Jury Encouragement Prize : Toyama Makoto, *Living Pillar*, Color on Paper, 2016

Yamatane Museum of Art Award: Contemporary *Nihonga*

Grand Prize and Prize for Excellence Winners from the first to fourth Exhibitions

Contemporary *Nihonga* exhibitions (12 works from the first through the fourth exhibitions)

Prize for Excellence : Matsuo Toshio, *Flight*, Color on Paper, 1970

Prize for Excellence : Oyama Katashi, *The Island of Amakusa: Praying in the Storeroom*, Color on Paper, 1973

Grand Prize : Ōmori Kazuo, *Yokagura: Shrine Dance at Night*, Color on Paper, 1975

Prize for Excellence : Niwa Takako, *Soliloquy*, Color on Paper, 1977

Approximately 52 works are to be displayed.

◆ **The Yamatane Museum of Art Award:**

Contemporary Nihonga (held 14 times, 1971-1997)

Acting on the principle of contributing through art to society espoused by our founder, Yamazaki Taneji (founder of Yamatane Securities, now SMBC Friend Securities Co., Ltd.), our museum instituted the Yamatane Museum of Art Award in 1971 as part of our program to encourage and promote *nihonga*. The *Yamatane Museum of Art Award: Contemporary Nihonga* exhibition was held fourteen times, every other year, through 1997. For the *Yamatane Museum of Art Award* exhibitions, artists recommended by the nomination committee showed new or as yet unexhibited work, and the jury selected one artist to receive the Grand Prize and two to receive the Prize for Excellence.

Exhibition Overview

In 1971, the Yamatane Museum of Art, which opened its doors in 1966, instituted the Yamatane Museum of Art Award as part of its efforts to encourage and promote *nihonga*. Held fourteen times, every other year between 1971 and 1997, the highly respected *Yamatane Museum of Art Award: Contemporary Nihonga* exhibition attracted widespread attention as the gateway to success for new *nihonga* artists.

As our museum celebrates the fiftieth year since its founding, we return to the purpose of the Yamatane Museum of Art Award while carrying it out a format appropriate for today, as a juried public entry exhibition. From this, the fifteenth holding of the award, the *Yamatane Museum of Art Award* exhibition was renamed *Yamatane Museum of Art NIHONGA AWARD: Seed*. Through this award, our objective will be to discover and encourage excellent artists working in new creative, contemporary directions in *nihonga*.

“Seed,” the word used in the name of the prize and of the exhibition, connects the character for “seed” (*tane*) in the name of our museum’s founder and first director, Yamazaki *Taneji*, in the name of the museum itself (*Yamatane*), and our hope to uncover and foster seeds of new talent that will carry *nihonga* on into the future.

This exhibition displays forty works, which, after rigorous screening, were nominated for awards. Many powerful works were submitted, and it was only after fierce debate that the seven judges selected four works for awards: Miyako Emi’s *On the Verge: Dream or Reality* for the Grand Prize, Hasegawa Masaya’s *Only* for the Prize for Excellence, Karimata Kosuke’s *Dynamic Scenery: Ramboda Falls in Sri Lanka* for the Special Prize, and Toyama Makoto’s *Living Pillar* for the Jury Encouragement Prize. For this exhibition, we added twelve Grand Prize and Prize for Excellence winners of the earlier Yamatane Museum of Art Awards, including Matsuo Toshio’s *Flight* and Oyama Katashi’s *The Island of Amakusa: Praying in the Storeroom*.

While providing a retrospective on our museum’s efforts, since its founding, to promote *nihonga*, the addition of these works, juxtaposed with the winning works of younger artists, also creates an opportunity to experience the changing atmospheres and moods over time in the ongoing development of *nihonga*.

*The Jury Encouragement Prize was created during the judging process at the request of the jury members.

Yamatane Museum of Art *NIHONGA AWARD: Seed 2016* — Works Selected for Awards —



Grand Prize
Miyako Emi
On the Verge: Dream or Reality



Prize for Excellence
Hasegawa Masaya
Only



Special Prize (Presented by Seiko Holdings Corporation)
Karimata Kōsuke
Dynamic Scenery: Ramboda Falls in Sri Lanka



Jury Encouragement Prize
Toyama Makoto
Living Pillar

Yamatane Museum of Art Award: Contemporary Nihonga

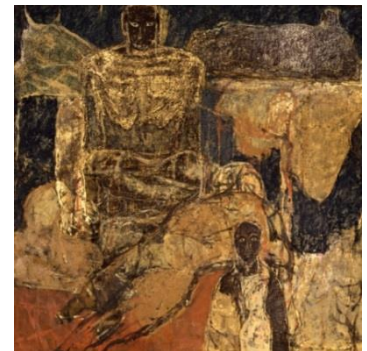
Grand Prize and Prize for Excellence Winners from the first to fourth Exhibitions



Prize for Excellence, 1971
Matsuo Toshio
Flight



Prize for Excellence, 1973
Oyama Katashi
The Island of Amakusa: Praying in the Storeroom



Prize for Excellence, 1973
Kojima Yūji
Persons



Grand Prize, 1975
Ōmori Kazuo
Yokagura: Shrine Dance at Night



Prize for Excellence, 1975
Hori Taimei
Girl



Prize for Excellence, 1977
Niwa Takako
Soliloquy