

【特別展】LOVE いとおしい…っ！ — 鏑木清方の恋もよう、奥村土牛のどうぶつ愛 —

Special Exhibition: LOVE Japanese Paintings of Adorable Things – Kaburaki Kiyokata's Romance, Okumura Togyū's Love of Animals –

Cafe Tsubaki (lit. meaning “Camellia”), on the lobby floor, was named after the Important Cultural Property and one of the most popular masterpiece of the Yamatane collection, Hayami Gyoshū's *Camellia Petals Scattering*. With a sunny space and a pleasant view of the ginkgo tree-lined avenue outside, we offer you a variety of menu such as special Japanese and Western sweets, light meals, and original beverages.

Among others, our wagashi, which is made by 'Kikuya' confectionary with a long and distinguished history in Aoyama, Tokyo, and inspired by the paintings from the exhibition on view, is another piece of art in this museum. The tranquil atmosphere of our cafe, with the refined Italian furniture by Cassina IXC., is a delightful place for you to be relaxed after enjoying the exhibition.

小夜 Sayo

小林古径の代表作《清姫》をモチーフに、可愛らしい和菓子に仕上げました。白あんに入った杏の風味もお楽しみいただけます。(杏入り白あん)

Smooth white bean paste with shredded apricots



小林古径
《清姫》のうち「寝所」
Kobayashi Kokei
*Sleeping Quarters:
Scenes from the Legend of Kiyohime*



かがり火 Kagaribi

川面に揺れる^{かがりび}篝火の明かりを錦玉羹で、鮎は羊羹、川底の石は胡麻入り白あんで表しました。玉堂が描いた鵜飼の情景をイメージした和菓子です。(ワイン風味錦玉羹・胡麻入り白あん・羊羹)

※アルコールは含まれません。
Transparent jelly confection with sesame seeds
△ It has a wine flavor but contains no alcohol.



川合玉堂
《鵜飼》
Kawai Gyokudō
Cormorant Fishing



凧 Rin

凧とした猫の柔らかな毛並みをきんとんで表現し、錦玉羹でつくった桔梗の花をアクセントに添えました。上質な黒糖を使った大島あん入りです。(黒糖風味大島あん)

Smooth red bean paste with brown sugar



小林古径
《猫》
Kobayashi Kokei
Cat



春の雪 Haru-no-Yuki

春の雪がうっすらと積もる葉と、南天の赤い実と葉をかたどりました。中は素材にこだわった菊家特製のこしあんです。(こしあん)

Smooth red bean paste



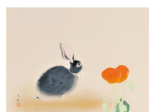
松林桂月
《春雪》
Matsubayashi Keigetsu
Spring Snow



福うさぎ Fuku-Usagi

こしあんをシナモン風味の練切りで包みました。胡麻入りの白あんで形作った兎と、ポピーをハートに見立てた錦玉羹が愛らしい一品です。(シナモン風味練切り・こしあん・胡麻入り白あん)

Smooth red bean paste with cinnamon flavor
△ It contains sesame seeds.



奥村土牛
《兎》
Okumura Togyū
Rabbit



※作品はすべて山種美術館蔵

※All works are the property of the Yamatane Museum of Art.

[Menu]

- ◎ Regular Coffee (Smart Coffee, Kyoto) ¥800
- ◎ Matcha ¥900
- ◎ Mariko Black Tea ¥750
- ◎ Tea of the Seasonal ¥750
- ◎ Wagashi Set ¥1,400
- ◎ Matcha Wagashi Set ¥1,500
- ◎ Cake set ¥1,450
- ◎ Seasonal Nyū-men ¥1,350

Take-away service is available only for more than 2 pieces. ¥710 per piece