

Special Exhibition Commemorating the 50th Anniversary of the Yamatane Museum of Art

The Best of the Yamatane Collection III

## Definitive *Nihonga* Masterpieces: The Kyoto Art World

— 19th Century to Contemporary Paintings

**10 December (Sat.) 2016– 5 February (Sun.) 2017**

(Closed on 1/10, from 12/29 to 1/2 and on Mondays, but open on 1/9)

**Hours:** 10 am - 5 pm (Last admission at 4:30 pm)

**Admission Fees:** Adults: 1,200 [1,000] yen; university and high school students: 900 [800] yen;  
middle school and younger children: free of charge

\* Figures in brackets are for groups of 20 or more, advance tickets, repeaters with used tickets, and those who are wearing kimono.

\* Disability ID holders and one person accompanying them are admitted free of charge.

**Organized by:** Yamatane Museum of Art and The Asahi Shimbun

### ◆ Highlights of the Exhibition ◆

Mori Kansai, *Takasago*, Color on Silk, Meiji Period, 1889, Yamatane Museum of Art

Tanomura Chokunyū, *A Hundred Flowers*, Color on Silk, Meiji Period, 1869, Yamatane Museum of Art

Takeuchi Seiō, *Tabby Cat* (Important Cultural Property), Color on Silk, Taishō Period, 1924,  
Yamatane Museum of Art

Takeuchi Seiō, *Ducklings*, Color on Silk, Shōwa Period, c. 1937, Yamatane Museum of Art

Yamamoto Shunkyo, *Pool in the Crater*, Color on Silk, Taishō Period, 1925, Yamatane Museum of Art

Uemura Shōen, *Scene from the Noh Play Kinuta*, Color on Silk, Shōwa Period, 1938, Yamatane Museum of Art

Uemura Shōen, *Composing a Poem*, Color on Silk, Shōwa Period, 1942, Yamatane Museum of Art

Uemura Shōen, *Feathered Snow*, Color on Silk, Shōwa Period, 1944, Yamatane Museum of Art

Nishimura Goun, *Polar Bear*, Color on Silk, Meiji Period, 1907, Yamatane Museum of Art

Hashimoto Kansetsu, *Frosty Morning*, Color on Silk, Shōwa Period, c. 1935-44, Yamatane Museum of Art

Tsuchida Bakusen, *Oharame, Women Peddlers*, Color on Gold-Leafed Silk Gauze, Taishō Period, 1915,  
Yamatane Museum of Art

Murakami Kagaku, *Nude* (Important Cultural Property), Color on Silk, Taishō Period, 1920,  
Yamatane Museum of Art

Ono Chikyō, *Lights in the Offing*, Color on Paper, Shōwa Period, 1977, Yamatane Museum of Art

Fukuda Heihachirō, *Young Women and Peach Trees*, Color on Silk, Taishō Period, 1916,  
Yamatane Museum of Art

Fukuda Heihachirō, *Peonies*, Color on Silk, Taishō Period, 1924, Yamatane Museum of Art

Fukuda Heihachirō, *Bamboo Shoots*, Color on Silk, Shōwa Period, 1947, Yamatane Museum of Art

Ikeda Yōson, *Grassland*, Color on Paper, Shōwa Period, 1976, Yamatane Museum of Art

Yamaguchi Kayō, *Life Newly Born*, Color on Paper, Shōwa Period, 1973, Yamatane Museum of Art

Yamaguchi Kayō, *Spirit of the Forest (Dryad)*, Color on Paper, Shōwa Period, 1976,  
Yamatane Museum of Art

Uemura Shōkō, *White Peacock*, Color on Paper, Shōwa Period, 1973, Yamatane Museum of Art

Uemura Atsushi, *Snow Geese*, Color on Paper, Shōwa Period, 1974, Yamatane Museum of Art

Approximately 60 works in total are to be displayed.

## Exhibition Overview

The Yamatane Museum of Art, which celebrated its fiftieth anniversary in 2016, was founded in 1966 as Japan's first museum specializing in *nihonga*. Its core was the personal collection of Yamazaki Taneji (1893–1983), founder of Yamatane Securities (now SMBC Friend Securities Co., Ltd.). In commemorating the museum's half-century milestone, we have selected what we term “definitive *nihonga* masterpieces,” works from the collection that are indispensable to any discussion of the history of modern art in Japan. These masterpieces by the most important artists of their day will be presented in two exhibitions, the first focusing on the Kyoto art world and the second on the Tokyo art world. Both exhibitions will display the *crème de la crème* of *nihonga*.

From the Meiji period on, *nihonga* artists have been acutely aware of Western art, which flowed into Japan, and have been exploring approaches to *nihonga* suited to the new age in which they lived. Participants in the Kyoto art world carried on both *yamato-e*, which originated in the Heian period, and the tradition of sketching from life rooted in the Edo-period Maruyama Shijō School. They also made innovations, including founding the Kyoto Prefectural Art School, Japan's first public school of art. In that context, a great number of highly talented *nihonga* artists who became art world leaders, including Takeuchi Seihō, and the first woman to be awarded the Order of Culture, Uemura Shōen, emerged. While respecting tradition, the highly flexible Kyoto setting introduced a series of new elements and contributed many new aspects to *nihonga*.

This exhibition introduces the quintessence of *nihonga* artists in the Kyoto art world from the Meiji period to today, through two Important Cultural Properties, *Tabby Cat*, a painting that is now the very face of our museum, by Takeuchi Seihō, and *Nude* by Murakami Kagaku. It also introduces gem-like masterpieces by other artists such as Uemura Shōen, Ono Chikkyō, Fukuda Heihachirō, Yamaguchi Kayō, Uemura Shōkō, and Uemura Atsushi. In commemorating the museum's half-century milestone, we hope this cornucopia of works from Kyoto will bring you an opportunity to enjoy the Kyoto art world, where artists who transcended conventional frameworks while staying true to traditional values opened up new terrain in *nihonga*.



Tanomura Chokunyū, *A Hundred Flowers* (detail), Color on Silk, Meiji Period, 1869, Yamatane Museum of Art



Takeuchi Seiho,  
*Tabby Cat* (Important Cultural Property)  
Color on Silk, Taishō Period, 1924  
Yamatane Museum of Art



Yamamoto Shunkyo, *Pool in the Crater*  
Color on Silk, Taishō Period, 1925  
Yamatane Museum of Art



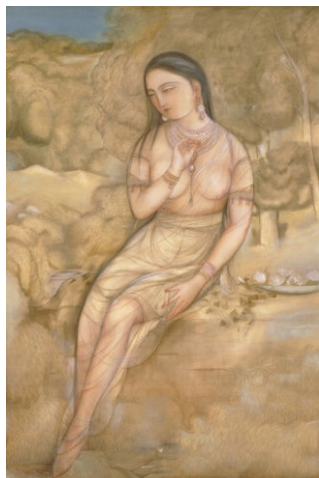
Uemura Shōen, *Feathered Snow*  
Color on Silk  
Shōwa Period, 1944  
Yamatane Museum of Art



Tsuchida Bakusen, *Oharame, Women Peddlers*, Color on Gold-Leafed Silk Gauze, Taishō Period, 1915, Yamatane Museum of Art



Nishimura Goun, *Polar Bear*  
Color on Silk  
Meiji Period, 1907,  
Yamatane Museum of Art



Murakami Kagaku  
*Nude* (Important Cultural Property)  
Color on Silk  
Taishō Period, 1920  
Yamatane Museum of Art



Ono Chikkyō, *Lights in the Offing*  
Color on Paper, Shōwa Period, 1977  
Yamatane Museum of Art