

[Thematic Exhibition] 120th Anniversary of the Japan Art Institute Exhibition:

Challengers in *Nihonga* – Taikan, Shunsō, Kokei, and Gyoshū

Period: 15 September (Sat.) – 11 November (Sun.) 2018

(Closed on 18 Sep, 25 Sep, 9 Oct and on Mondays, open on 17 Sep, 24 Sep and 8 Oct.)

Hours: 10am - 5pm (Last admission at 4:30pm)

Organized by: Yamatane Museum of Art and Nikkei Inc.

List of Works

Period of Display ○: 9/15-10/14 ●: 10/16-11/11

All works are the property of the Yamatane Museum of Art.

No.	Artists	Title	Techniques / Materials	Date	
Section 1: The Beginning of the Japan Art Institute					
1	Kanō Hōgai (1828-1888)	<i>Cotton Roses and Egret</i>	Color on Paper	c. 1872	
2	Hashimoto Gahō (1835-1908)	<i>The Gate of Furo and The Zhangsheng Palace</i>	Color on Silk	1907	
3	Yokoyama Taikan (1868-1958)	<i>Yanshan Scroll</i>	Ink on Paper	1910	
4	Shimomura Kanzan (1873-1930)	<i>Acalanatha (Immovable Wisdom King)</i>	Color on Silk	c. 1904	
5		<i>Hazy Moon</i>	Ink and Light Color on Silk	c. 1914	
6	Hishida Shunsō (1874-1911)	<i>Early Summer (A Cowherd)</i>	Color on Silk	1906	
7		<i>After the Rain</i>	Color on Silk	c. 1907	
8		<i>Cowherd in the Moonlight</i>	Color on Silk	1910	
9		<i>Evening in the Forest</i>	Ink and Light Color on Paper	20th Century	
Section 2: The Re-established Japan Art Institute					
10	Yokoyama Taikan (1868-1958)	<i>Mt. Kisen</i>	Color on Paper	1919	
11		<i>The Enchanted Mt. Penglai on the Island of Eternal Youth</i>	Color on Silk	c. 1939	
12	Kimura Buzan (1876-1942)	<i>Autumn Colors</i>	Color on Silk	20th Century	
13	Imamura Shikō (1880-1916)	<i>Kenreimon-in at Ōhara: Scene from the Tale of the Heike</i>	Color on Silk	1909	
14		<i>Early Spring</i>	Color on Silk	1916	
15	Kobayashi Kokei (1883-1957)	<i>Scenes from the Legend of Kiyohime</i>	<i>Journey's Start</i>	Ink on Paper	1930
			<i>Sleeping Quarters</i>	Color on Paper	
			<i>Kumano Shrine</i>		
			<i>Lady Kiyohime</i>		
			<i>Riverbanks</i>		
			<i>Hidaka River</i>		
			<i>Serpent Encircling the Bell</i>		
			<i>Cherry Tree at the Graves of Anchin and Lady Kiyohime</i>		
16		<i>Maitreya</i>	Color on Silk		1933
17		<i>Pine, Bamboo, and Plum</i>	Color on Silk	c. 1933	
18	Yasuda Yukihiko (1884-1978)	<i>Kannon, the Bodhisattva of Mercy</i>	Color on Silk	c. 1924	
19	Omoda Seiju (1891-1933)	<i>Spring Garden</i>	Color on Silk	1918	
20	Tomitori Fūdō (1892-1983)	<i>Autumn Foliage</i>	Color on Paper	1934	
21	Hayami Gyoshū (1894-1935)	<i>Autumn in Yamashina</i>	○ Color on Silk	1917	
22		<i>Persimmons</i>	Color on Paper	1923	
23		<i>Midday in Spring</i>	○ Color on Silk	1924	
24		<i>Two Themes on Insect Life: Spider's Trap Beneath the Leaves and Moths Dancing Around the Light</i>	Color on Silk	1926	
25		<i>Camellia Petals Scattering</i> [Important Cultural Property]	● Color on Gold Ground on Paper	1929	
26		<i>Chrysanthemums</i>	Color on Silk	1931	
27		<i>Album of Sketches, I</i>	Pencil, Colored Pencil, and Color on Paper	1931	
28		<i>Black Peonies</i>	Ink and Color on Paper	1934	

No.	Artists	Title	Techniques / Materials	Date
Section 3: The Re-established Japan Art Institute after World War II				
29	Yokoyama Taikan (1868-1958)	<i>Mt. Fuji, the Sacred Mountain</i>	Ink and Light Color on Paper	c. 1947
30	Kobayashi Kokei (1883-1957)	<i>Cat</i>	Color on Paper	1946
31		<i>Irises</i>	Color on Paper	1952
32	Yasuda Yukihiro (1884-1978)	<i>Minamoto no Yoshitsune in Hiraizumi</i>	Color on Paper	1965
33		<i>Oda Nobunaga Dancing before His Departure for the Front</i>	Color on Paper	1970
34		<i>Minamoto no Yoshitsune's Boat in Daimotsu Bay: Scene from Gikeiki, The Chronicle of Yoshitsune</i>	Color on Paper	1968
35	Maeda Seison (1885-1977)	<i>Anatomical Dissection</i>	Color on Paper	1970
36	Okumura Togyū (1889-1990)	<i>Himeji Castle</i>	Color on Paper	1955
37	Ogura Yuki (1895-2000)	<i>Enjoying the Cool</i>	Color on Paper	1973
38	Sakai Sanryō (1897-1969)	<i>Cormorant Fishing at Night</i>	Ink and Light Color on Paper	1964
39	Iwahashi Eien (1903-1999)	<i>Splendor of the Setting Sun</i>	Color on Paper	1977
40	Kataoka Tamako (1905-2008)	<i>Oei, Hokusai's Daughter</i>	Color on Paper	1982
41	Moriya Tadashi (1912-2003)	<i>Kusunoha, Mother of Abe-no-Seimei in the Legend</i>	Color on Paper	1983
42	Yoshida Yoshihiko (1912-2001)	<i>Mt. Asama in Early Winter</i>	Color on Paper	1977
43	Morita Kōhei (1916-1994)	<i>Northern Kyoto in Mid Autumn</i>	Color on Paper	1965
44	Matsuo Toshio (1926-2016)	<i>Flight</i>	Color on Paper	1970
45	Hirayama Ikuo (1930-2009)	<i>The Royal Palace of Babylon</i>	Color on Paper	1972
46	Oyama Katashi (1934-)	<i>The Island of Amakusa: A Baptismal Ceremony</i>	Color on Paper	1972
47	Tabuchi Toshio (1941-)	<i>Embanked Village</i>	Color on Paper	1979
48	Matsumura Kōji (1948-)	<i>Tsugaru</i>	Color on Paper	1975
49	Miyasako Masaaki (1951-)	<i>Fireworks into the Water: Spiral</i>	Color on Silk	2012
50	Nishida Shun'ei (1953-)	<i>Keman (A Pendant Ornamenting a Buddhist Sanctuary)</i>	Color on Paper	1983



Yokoyama Taikan
The Enchanted Mt. Penglai on the Island of Eternal Youth



Hishida Shunsō, *Cowherd in the Moonlight*



Kobayashi Kokei, *Scenes from the Legend of Kiyohime: Hidaka River*



Hayami Gyoshū, *Two Themes on Insect Life:
Spider's Trap Beneath the Leaves and Moths Dancing Around the Light*



Hayami Gyoshū, *Camellia Petals Scattering*
[Important Cultural Property] 10/16-11/11

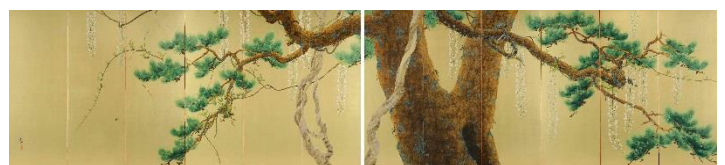
Next Exhibition: Special Exhibition
Art Associated with the Imperial Family
—*Nihonga Decorating the Imperial Palaces*

Period : 17 November (Sat.) 2018 – 20 January (sun.) 2019

(Closed on 25 Dec, 29 Dec to 2 Jan, 15 Jan and on Mondays,
open on 24 Dec and 14 Jan.)

Address: 3-12-36 Hiro-o Shibuya-ku, Tokyo 150-0012 JAPAN

TEL: +81-(0)3-5777-8600 (NTT Hello Dial, English available) **URL:** <http://www.yamatane-museum.jp/>



Shimomura Kanzan, *Ancient Pine Tree and White Wisterias*
1921, Yamatane Museum of Art