

Special 140th Anniversary Exhibition:
Uemura Shōen and Splendid Japanese Women Artists



Uemura Shōen, *Composition of a Poem*, Yamatane Museum of Art

18 April (Sat.) 2015 - 21 June (Sun.) 2015

(Closed on 7 May, and on Mondays, but open on 4 May.)

Organized by: Yamatane Museum of Art and Nikkei Inc.

With the cooperation of Jissen Women's Educational Institute Kosetsu Memorial Museum

Hours: 10am - 5pm (Last admission at 4:30pm)

Admission Fees: Adults: 1,200 [1,000] yen; university and high school students: 900 [800] yen; middle school and younger children: free of charge

*Figures in brackets are for groups of 20 or more, tickets purchased in advance, repeaters with used tickets, and for those who are wearing kimono.

*Disability ID Holders and one person accompanying them are admitted free of charge.

Highlights of the Exhibition

• Uemura Shōen:

Uemura Shōen, *Firefly*, Color on Silk, Taishō Period, 1913, Yamatane Museum of Art

Uemura Shōen, *Firefly*, Color on Silk, Shōwa Period, 1929, Yamatane Museum of Art

Uemura Shōen, *Evening*, Color on Silk, Shōwa Period, 1935, Yamatane Museum of Art

Uemura Shōen, *Fragrance of Spring*, Color on Silk, Shōwa Period, 1940, Yamatane Museum of Art

Uemura Shōen, *Young Lady*, Color on Silk, Shōwa Period, 1942, Yamatane Museum of Art

Uemura Shōen, *Composition of a Poem*, Color on Silk, Shōwa Period, 1942, Yamatane Museum of Art

Uemura Shōen, *Listening to a Cuckoo's Call*, Color on Silk, Shōwa Period, 1948, Yamatane Museum of Art

Uemura Shōen, *Scene from the Noh Play Kinuta*, Color on Silk, Shōwa Period, 1938, Yamatane Museum of Art

Uemura Shōen, *Feathered Snow*, Color on Silk, Shōwa Period, 1944, Yamatane Museum of Art

Uemura Shōen, *Snowy Day*, Color on Silk, Shōwa Period, 1948, Yamatane Museum of Art

•Noguchi Shōhin and Imperial Household Artists

Noguchi Shōhin, *Doll Festival*, Color on Silk, Edo Period, 1863, Jissen Women's Educational Institute Kosetsu Memorial Museum

Noguchi Shōhin, *Beauty*, Color on Silk, Edo to Meiji Period, c. 1866-68, Jissen Women's Educational Institute Kosetsu Memorial Museum

Noguchi Shōhin, *Elegant Gathering in the Western Garden*, Color on Silk, Meiji Period, 1896, Jissen Women's Educational Institute Kosetsu Memorial Museum

Noguchi Shōhin, *Quiet Retreat in a Deep Valley*, Color on Silk, Meiji Period, 1904, Jissen Women's Educational Institute Kosetsu Memorial Museum

Noguchi Shōhin, *Rose Mallows and Duck*, Color on Silk, Meiji Period, 1900, Yamatane Museum of Art

Noguchi Shōhin, *Scenes of Hakone*, Color on Paper, Meiji Period, 1907, Yamatane Museum of Art

Other Imperial Household Artists

Takeuchi Seihō, *Itako in Early Summer*, Color on Silk, Shōwa Period, 1930, Yamatane Museum of Art

Kawai Gyokudō, *A Fine Morning*, Color on Silk, Shōwa Period, 1946, Yamatane Museum of Art

Kaburaki Kiyokata, *Agalloch Pillow*, Color on Silk, Shōwa Period, 1936, Yamatane Museum of Art

•Women Artists' Progress: From the Closing Years of the Tokugawa Shogunate to the Present

Okuhara Seiko, *Captivating Beauty of Peonies' Colors in Spring*, Color on Silk, Meiji Period, 1897, Jissen Women's Educational Institute Kosetsu Memorial Museum

Ragusa Tama, *Orchid*, Color on Silk, Shōwa Period, c. 1933-39, Jissen Women's Educational Institute Kosetsu Memorial Museum

Kawabe Seiran, *Refined Beauties*, Color on Silk, Meiji Period, 1889, Jissen Women's Educational Institute Kosetsu Memorial Museum

Kawanabe Kyōsui, *Murasaki Shikibu, Novelist*, Color on Silk, 19th to 20th Century, Jissen Women's Educational Institute Kosetsu Memorial Museum

Itō Shōha, *Party Under the Cherry Blossoms*, Color on Silk, 20th Century, Jissen Women's Educational Institute Kosetsu Memorial Museum

Ikeda Shōen, *Stream in Spring*, Color on Silk, 20th Century, Jissen Women's Educational Institute Kosetsu Memorial Museum

Kujō Takeko, *Autumn Foliage Viewing*, Color on Silk, 20th Century, Jissen Women's Educational Institute Kosetsu Memorial Museum

Shima Seien, *Evening Cool*, Color on Silk, 20th Century, Jissen Women's Educational Institute Kosetsu Memorial Museum

Kitani Chigusa, *Path of Dreams*, Color on Silk, Taishō Period, c.1917, Jissen Women's Educational Institute Kosetsu Memorial Museum

Ogura Yuki, *Dancing (Maiko, Apprentice Geisha)*, Color on Gold-Leafed Paper, Shōwa Period, 1971, Yamatane Museum of Art

Ogura Yuki, *Enjoying the Cool*, Color on Paper, Shōwa Period, 1973, Yamatane Museum of Art

Ogura Yuki, *Dancing (Geisha)*, Color on Gold-Leafed Paper, Shōwa Period, 1972, Yamatane Museum of Art

Kataoka Tamako, *Oei, Hokusai's Daughter*, Color on Paper, Shōwa Period, 1982, Yamatane Museum of Art

Kitazawa Eigetsu, *Deep in Thought (Higuchi Ichiyō, A Meiji-period Woman Novelist)*, Color on Paper, Shōwa Period, 1973, Yamatane Museum of Art

"My intention is to create serene, gem-like paintings free of any vulgarity,"⁽¹⁾ wrote Uemura Shōen (1875-1949), the first woman to be awarded the Order of Culture. To commemorate the 140th anniversary of her birth, we are proud to present an exhibition focusing on Shōen and women artists working in *Nihonga* from the late nineteenth century to the present.

"Shōen in the west, Kiyokata⁽²⁾ in the east": Shōen is ranked with Kiyokata, another distinguished *Nihonga* artist known for his paintings of beautiful women, in that famous phrase. Shōen, who created pure, noble images of women, has been recognized as a leading modern *Nihonga* artist. She was, indeed, one of the 79 artists, only two of whom were women, designated as an Imperial Household Artist between 1890, when the Imperial Household System was instituted to preserve Japanese art and promote artists' creative work, and 1944. In a time when male artists made up the vast majority of those awarded that honor, and when the position of women in society and their opportunities were restricted, her being named an Imperial Household Artist indicates how greatly she was respected.

This exhibition presents all eighteen works by Shōen in the Yamatane Museum of Art collection, including *Firefly*, *Scene from the Noh Play Kinuta*, and *Feathered Snow*. It also includes *Scenes of Hakone*, a *Nanga* masterpiece by the only other woman Imperial Household Artist, Noguchi Shōhin, from her late period, also from the museum's collection, as well as *Nihonga* by Ogura Yuki, Kataoka Tamako, and Kitazawa Eigetsu. With the cooperation of the Jissen Women's Educational Institute Kosetsu Memorial Museum, which has done extensive research on women artists, we are also able to exhibit work by Noguchi Shōhin, Okuhara Seiko, Kawanabe Kyōsui, Itō Shōha, Ikeda Shōen, Kujō Takeko, and Shima Seien from its collection.

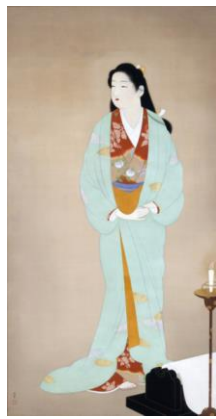
Women have come to play an increasingly vigorous part in society in recent years. Many women continue, however, to confront major issues in their public and private lives: work, family, child rearing, and caring for other family members, for example. This exhibition addresses how women made their way as artists in even more turbulent times. These artists' words and works will give visitors the opportunity to experience their unique perspectives and diverse styles.

(1) Uemura Shōen, "Seikaken zakki (Seikaken miscellany)," from *Seibishō*.

(2) Kaburaki Kiyokata, 1878-1972, was a *Nihonga* artist who is known for his paintings of beautiful women and genre scenes of life in downtown Tokyo.



Uemura Shōen,
Firefly,
Color on Silk,
Shōwa Period, 1929,
Yamatane Museum of Art



Uemura Shōen,
Scene from the Noh Play Kinuta,
Color on Silk,
Shōwa Period, 1938,
Yamatane Museum of Art



Uemura Shōen,
Feathered Snow,
Color on Silk,
Shōwa Period, 1944,
Yamatane Museum of Art



Ikeda Shōen,
Stream in Spring,
color on silk, 20th century
Jissen Women's Educational Institute
Kosetsu Memorial Museum



Kujō Takeko,
Autumn Foliage Viewing,
color on silk, 20th century
Jissen Women's Educational Institute
Kosetsu Memorial Museum



Ragusa Tama,
Orchid,
color on silk, Shōwa Period, c.1933-39
Jissen Women's Educational Institute
Kosetsu Memorial Museum



Noguchi Shōhin,
Scenes of Hakone,
Color on Paper,
Meiji Period, 1907,
Yamatane Museum of Art